

GIS Mapping & Personal GEO Databases



- Engineering Grade GPS for GIS
- Core Plus Standards
- Flood Analysis Models
- Land Planning
- CAD ↔ Shape File Conversions
- Tax Map Digitizing / Parcel Overlays
- Personal GEO Database Clipping
 - Soils, NWI, Flood Plain
 - Contours, Watersheds
 - Parcels, Land Use, Land Cover
- Photo Attribute Data Collection
 - Sign Inventory
 - Parks and Recreation
 - Cemetery Inventory
 - MS4 Storm Sewer Inventory
 - Stream Restoration/Erosion
- Utility Base Mapping
- Right of Way Surveys
- Aerial Imagery Overlays
- Trail Mapping / Video
- GIS/GPS Software Training



Personal GEO Databases for Hydraulic Analysis

BLR has expanded its services into

the field of GIS data applications. We have implemented ESRI software and trained staff to complement our existing AutoCAD mapping environment. As engineers and surveyors, we understand the complexity of assembling reliable base maps. Our ability to manipulate data within both software environments allows us to collaborate with agencies and other users. Our in-house database covering the Great Lakes Watershed and Ohio allows us to produce personal geo-databases and maps to end users in an efficient manner. Clients can also benefit from data enhancements utilizing our centimeter accuracy GPS. We currently have compiled complete data layers for Ohio. ■

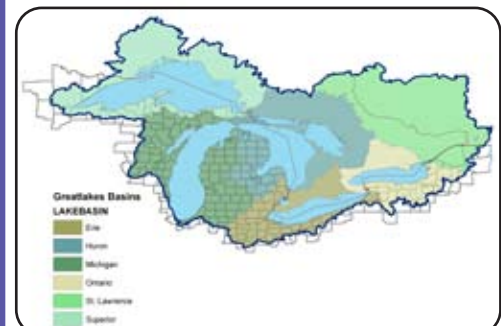


An Engineering and Surveying Company

GIS Solutions - Storm Water Management - Residential Land Planning
Industrial & Commercial Site Development

Bruce L. Robinson, P.E., P.S.
President
Email: BRUCE@BLROBINSON.COM

Phone: 330.836.8487
Cell: 330.352.0865
Fax: 330.836.8490
www.blrobinson.com



Great Lakes Basin Region - 1st Level 2-digit HUC

www.GPSGREATLAKES.com

Web Based GIS Platform



39°N



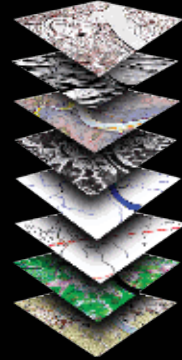
501 N. Morton Street Suite 106R
Bloomington, IN 47404-3731
812.320.5467
<http://www.39degreesnorth.com>

554 White Pond Drive Suite F
Akron, OH 44320-1146
330.836.8487
<http://www.blrobinson.com>

Enterprise GIS

Our team has developed an enterprise GIS application that will allow your organization to access statewide data in a convenient Web-based format. This Web-based format will allow your organization to have the many benefits of GIS, without the expense of large servers, additional personnel, and software purchases.

- Ohio Base Layers
- State/County Boundaries
- Rivers/Lakes/Streams
- Soils Inventory
- Aerial Imagery
- Original Land Subdivisions
- Watershed Boundaries
- Shaded Relief
- Contours



GIS Development

Our team can develop additional layers, such as parcel fabric to link Auditor and Assessor information, and asset inventory. Over time, this data set can be migrated into an in-house GIS program within your organization. Our team will also be able to assist with the transition, development, training and maintenance of your program.

- Custom Layer Development
- Parcel Fabric Creation
- Utility Asset Inventory
- Auditor/Assessor Links
- Application Development
- Photo Attribute Data Collection
- Regional Atlas Development
- Tax Map Digitizing
- Training GIS/GPS
- Cad ↔ Shape Conversions



PROJECT LINKS

<http://igs.indiana.edu/ARCIMS/>

www.GPSGreatLakes.com

<http://GIS.co.Monroe.IN.US>



39°N

is a Certified



Business Partner

Storm Water Management



- Water Quality/Flood Control
- Permeable Pavement
- Green Roof/Rain Gardens
- SWP3 Design & Inspection
- NPDES Permit Compliance
- Water Recycle/ Irrigation



In today's water quality conscious world, BLR is providing innovative solutions to address the requirements of the regulatory agencies. Developers, municipalities, and contractors alike can benefit from BLR's green solutions to water quality and storm water management.

Our designs team is trained with the CPESC and CPSWQ certification program, thoroughly understands the latest regulatory design requirements. ■



An Engineering and Surveying Company

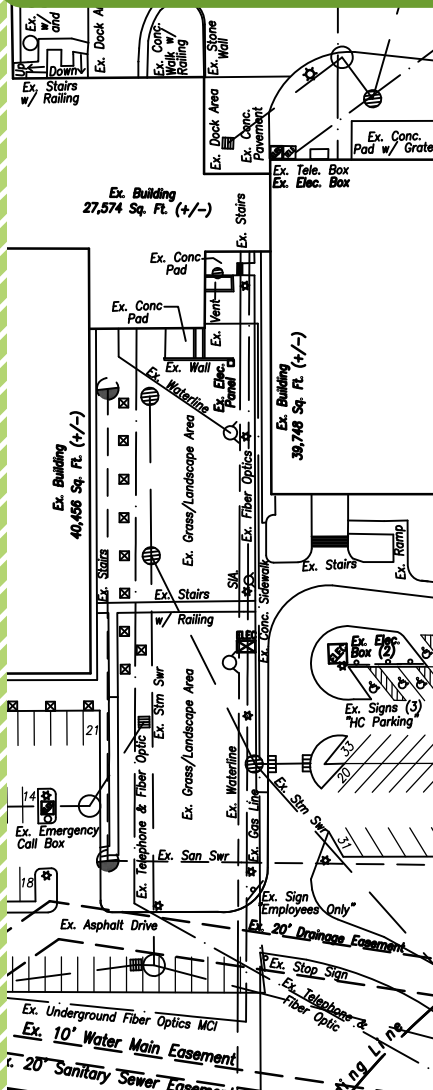
GIS Solutions - Storm Water Management - Residential Land Planning
Industrial & Commercial Site Development

Phone: 330.836.8487
Cell: 330.352.0865
Fax: 330.836.8490
www.blrobinson.com



Land Surveying

- ALTA/ACSM Surveys
- Construction Staking
- Utility/Topographic Surveys
- Photo GPS/GIS Inventory
- Facilities Inventory



BLR continues to refine our

practices and methodology to stay on the leading edge of technology. BLR will continue to explore and incorporate new land surveying technology to provide the best service and end-product to each client. Our technology includes centimeter accuracy GPS, ESRI compatible photo attribute GPS, and mobile mapping with active track capabilities. Utilizing active sync and Mobile 6 technology, our surveyors can download data from virtually anywhere allowing regional flexibility and on demand turn around for our client's data collection needs. ■



An Engineering and Surveying Company

GIS Solutions - Storm Water Management - Residential Land Planning
Industrial & Commercial Site Development

Bruce L. Robinson, P.E., P.S.
President
Email: BRUCE@BLROBINSON.COM

Phone: 330.836.8487
Cell: 330.352.0865
Fax: 330.836.8490
www.blrobinson.com

Telecommunications Certification



- Raw Land Surveys
- Site Plan Development
- Utility Easements and Legal Descriptions
- 1A Certifications
- 2C Certifications
- Construction Staking



BLR has been providing services to the telecommunications industry since opening its door ten years ago. Our clients have come to expect a quality product produced under a tight deadline. ■



An Engineering and Surveying Company
GIS Solutions - Storm Water Management - Residential Land Planning
Industrial & Commercial Site Development

Phone: 330.836.8487
Cell: 330.352.0865
Fax: 330.836.8490
www.blrobinson.com





Oil and Gas Lease Boundary

- Plat of Well Locations
- Aerial Orthophoto Overlays
- Site Plan Development
- Gas Line Mapping



Our Ohio database includes

many of the ODNR data layers.

Utilizing our ArcGIS products we can query our database to produce custom maps as shown below. In addition we can field locate and inventory your existing facilities. ■



An Engineering and Surveying Company

GIS Solutions - Storm Water Management - Residential Land Planning
Industrial & Commercial Site Development

Phone: 330.836.8487
Cell: 330.352.0867
Fax: 330.836.8490
www.blrobinson.com





Utility Inventory

GPS with geo-tagged images



- Accurate Mapping Technology
- GEO-Referenced Digital Photography
- Joint Use Analysis
- Background Reference Maps
- GPS Handheld Imagery
- Upload Inventory Files
- GPS Training
- Personal GEO Database Clipping



CAD Conversion, Lambda Tech - Houston

Rural Electric and municipal power

agencies are responsible for miles of expensive infrastructure such as utility poles, transformers, lighting, meters and other features. Managing these assets can become an overwhelming and complex task for both small and large utility agencies.

B. L. Robinson makes this task easier with accurate mapping technology and higher resolution digital photography. Now managers can view a field asset from their office computer. Digital photos can be used for many utility operations such as maintenance, repair, billing, joint-use audits and more. ■



Town of Etna Green, Indiana



An Engineering and Surveying Company

GIS Solutions - Storm Water Management - Residential Land Planning
Industrial & Commercial Site Development

Phone: 330.836.8487
Cell: 330.352.0865
Fax: 330.836.8490
www.blrobinson.com