

GIS Mapping & Personal GEO Databases



- Engineering Grade GPS for GIS
- Core Plus Standards
- Flood Analysis Models
- Land Planning
- CAD ↔ Shape File Conversions
- Tax Map Digitizing / Parcel Overlays
- Personal GEO Database Clipping
 - Soils, NWI, Flood Plain
 - Contours, Watersheds
 - Parcels, Land Use, Land Cover
- Photo Attribute Data Collection
 - Sign Inventory
 - Parks and Recreation
 - Cemetery Inventory
 - MS4 Storm Sewer Inventory
 - Stream Restoration/Erosion
- Utility Base Mapping
- Right of Way Surveys
- Aerial Imagery Overlays
- Trail Mapping / Video
- GIS/GPS Software Training



Personal GEO Databases for Hydraulic Analysis

BLR has expanded its services into

the field of GIS data applications. We have implemented ESRI software and trained staff to complement our existing AutoCAD mapping environment. As engineers and surveyors, we understand the complexity of assembling reliable base maps. Our ability to manipulate data within both software environments allows us to collaborate with agencies and other users. Our in-house database covering the Great Lakes Watershed and Ohio allows us to produce personal geo-databases and maps to end users in an efficient manner. Clients can also benefit from data enhancements utilizing our centimeter accuracy GPS. We currently have compiled complete data layers for Ohio. ■

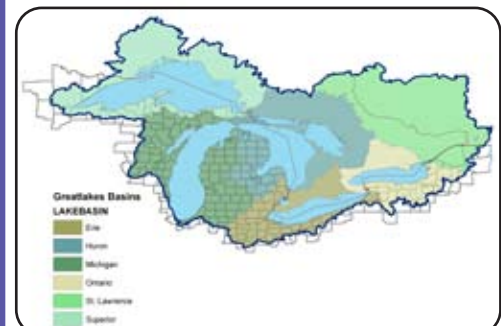


An Engineering and Surveying Company

GIS Solutions - Storm Water Management - Residential Land Planning
Industrial & Commercial Site Development

Bruce L. Robinson, P.E., P.S.
President
Email: BRUCE@BLROBINSON.COM

Phone: 330.836.8487
Cell: 330.352.0865
Fax: 330.836.8490
www.blrobinson.com



Great Lakes Basin Region - 1st Level 2-digit HUC

www.GPSGREATLAKES.com